



WHERE STYLE  
**MEETS COMFORT**







## 40 YEARS OF INNOVATION

The ComfortStar™ patio door is the by-product of nearly 40 years of innovation and commitment to consistently exceed industry standards – providing homeowners with products of exceptional value, and builders the versatility for any installation application.

## Complete Comfort

Boasting superior thermal performance and high condensation resistance through modular design technology, ComfortStar™ improves the home's comfort levels through unrivaled energy performance and innovative construction.

### Cardinal LoE-180™

When the weather turns frigid, Cardinal LoE-180™ glass is the perfect cold remedy; keeping homes warmer and more comfortable by blocking heat loss to the outside and letting the sun's heat pour in.

Where solar heat gain protection is required, LoE366 upgrade is available.

### Multi-Chambered Sash

Our innovative multi-chambered sash improves convective heat flow, enhancing thermal performance while improving overall U-value.

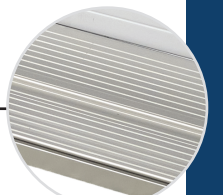


### Straight-Line Design

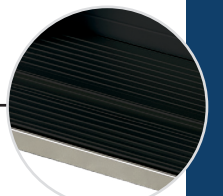
The appearance is both functional and visually impressive, creating a stunning and inviting living space for any home design.

### Self-Draining Sill

Available in clear or black anodized\*, our self-draining sill protects the interior of your home by effectively re-routing water or moisture build-up and directing it to the exterior.



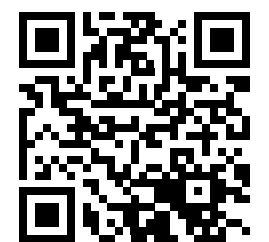
Clear Anodized Sill



Black Anodized Sill

## SCAN THE QR

Watch as the ComfortStar™ sliding patio door effortlessly re-routes excess moisture and protects the home from water infiltration.



\*Sill's come standard in grey PVC.



Due to variations in the printing process, the colours shown may not be exact.  
Ask your North Star dealer to show you an actual colour sample. E.&O.E.  
Specifications are subject to change without notice.



## Long-Term Protection

Protect your home from the sun's harmful rays with Fusion Colour Wrap™ UV-resistant laminates. This durable method is extremely resistant to scratches and abrasions and is unaffected by environmental pollutants. Enjoy a 20-year warranty on all interior and exterior Fusion Colour Wrap™ products.

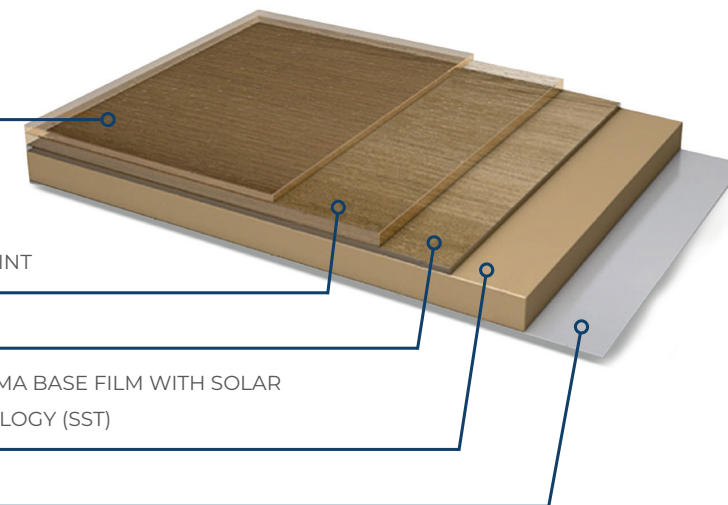
TRANSPARENT  
ACRYLIC LAYER

TRANSPARENT  
POLYMETHYL  
METHACRYLATE  
(PMMA) FILM PRINT

PRINT LAYER

PIGMENTED PMMA BASE FILM WITH SOLAR  
SHIELD TECHNOLOGY (SST)

PRIMER



STANDARD  
WHITE

MIDNIGHT  
BLACK

COCOA

HICKORY

SABLE

ANTHRACITE  
GREY

IVORY

SANDALWOOD

ESPRESSO

# FUSION

COLOUR WRAP™

## Exterior Fusion Colour Wrap™

The Fusion Colour Wrap™ application process is a sophisticated method used to prevent our colours from chipping or peeling like paint can over time.

All ComfortStar™ sliding patio doors come with a generous assortment of exterior colour options. We offer 9 UV-resistant exterior laminated traditional and architectural colours, all of which match our Series 1000 windows.



## UV-Resistant Laminates

The Fusion Colour Wrap™ is a multi-layered film that is applied to vinyl using polyurethane reactive hot melt to create a permanent bond between the wrap and vinyl; producing an extremely resistant finish that performs exceptionally well in all applications, including sea-side. Worry less about dirt and grime build-up with North Star's easy-to-maintain coloured laminates.





## DESIGNED FOR COMFORT

Cutting edge energy efficiency and constant innovation has awarded the ComfortStar™ patio door the ENERGY STAR® Most Efficient distinction.

## The Efficient Choice

As an ENERGY STAR® Most Efficient patio door, ComfortStar™ was thoughtfully crafted to address long-term comfortability and provide a high degree of protection against the weathering elements and water infiltration. Our state-of-the-art patio door addresses the need for sustainable building products that are fabricated and function with environmental impact top-of-mind. As an ENERGY STAR® Most Efficient product, you can rest easy knowing you're investing in a cleaner, greener future.

## Energy Efficient Features

- 1

**Super Spacer® – The Quanex Premium Super Spacer**  
between glass panes resists condensation, reduces noise, and boosts R-values by up to 30%.
- 2

**Cardinal LoE-180™ –**  
When the weather turns frigid, Cardinal LoE-180™ glass is the perfect cold remedy; keeping homes warmer and more comfortable by blocking heat loss to the outside and letting the sun's heat pour in. Where solar heat gain protection is required, LoE366 upgrade is available.
- 3

**Energy Efficient Extrusions –**  
North Star's multi-chambered vinyl extrusions save energy and money while resisting warping, cracking, and peeling.
- Other Glass Options Include:**  
Triple glazing (certain sizes only)  
Bronze- and gray-tint glass

## Performance Ratings

Glass Option	Thickness	Gap Fill	U-value (imp)	U-value (m)	SHGC	VT	CR	ER	Energy Star Can	Energy Star USA
366-Clear	Double	Argon	0.26	1.48	0.21	0.5	58	19	No	Yes
Clear-180	Double	Argon	0.27	1.53	0.53	0.61	57	36	Yes	Yes
366-Clear-Clear	Triple	Argon	0.21	1.19	0.2	0.46	66	25	Yes	Yes
Clear-180-Clear	Triple	Argon	0.22	1.25	0.49	0.56	66	40	Yes	Yes
Clear-180-180	Triple	Argon	0.18	1.02	0.45	0.54	70	43	Yes	Yes

## NAFS Results

Product Type	Canadian Air Rating	Water Penetration	Design Load	Performance Grade
Sidelite	Fixed	440 Pa	2400 Pa	PG 50
2-Panel	A3	360 Pa	2400 Pa	PG 50
4-Panel	A2	290 Pa	1680 Pa	PG 35





# Features & Customizations

## Architectural Accents

Create a unified, timeless aesthetic through the use of traditional or contemporary grilles, available in four sleek profiles: 1/4" flat, 5/8" flat, 3/4" contour and 7/8" SDL.

Our **Between The Glass (BTG)** grilles are encased between the two panes of insulating glass, leaving a smooth surface that's a breeze to clean. Our **Simulated Divided Lites (SDL)** grilles are applied to the outer surfaces of the insulated glass for a more traditional profile and offer the outstanding performance of our energy efficient windows and patio doors.



5/8" FLAT



1/4" FLAT



3/4" CONTOUR



7/8" SDL

## Optional Features

For added security, opt to include a security bolt and/or security bar to your ComfortStar™ sliding patio door. Security bolts can conveniently secure a sliding door in a partially opened position, allowing optimal airflow and preventing intruders, while our anti-lift lock security bar prevents the sash from opening.

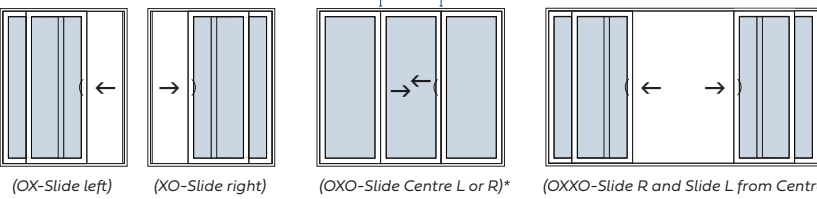
# Innovative Accents

## Internal Mini Blinds

North Star's internal mini-blinds are sealed between two panes of tempered safety glass. Finger tip controls allow the blinds to be raised or lowered and adjusted as needed to allow for light or privacy. No cleaning is ever required!

	STANDARD SLIDING PATIO DOOR WIDTHS								
	2 Panel Doors			3 Panel Doors			4 Panel Doors		
HEIGHT	58 3/4	70 3/4	94 3/4	90	108	144	116	140	188
79 1/2	*	*	*	*	*	*	*	*	*
with Internal Mini Blinds	*	*		*	*		*	*	
with Triple Glazing	*	*	*	*	*	*	*	*	*
82 1/2	*	*	*	*	*	*	*	*	*
with Internal Mini Blinds	*	*		*	*		*	*	
with Triple Glazing	*	*	*	*	*	*	*	*	*
95 1/2		*	*		*	*		*	*
with Triple Glazing		*	*		*	*		*	*

X = Operating Panel O=Fixed Panel



\*3-Panel OXO is a sidelite and sliding panel combination.



## Peace of Mind

Elevate the security of your home with our contemporary ComfortStar™ hardware. Every door manufactured comes equipped with a standard white or black single-point locking mechanism. For added assurance, multi-point, keyed locks and easy-to-use security bolts are also available.

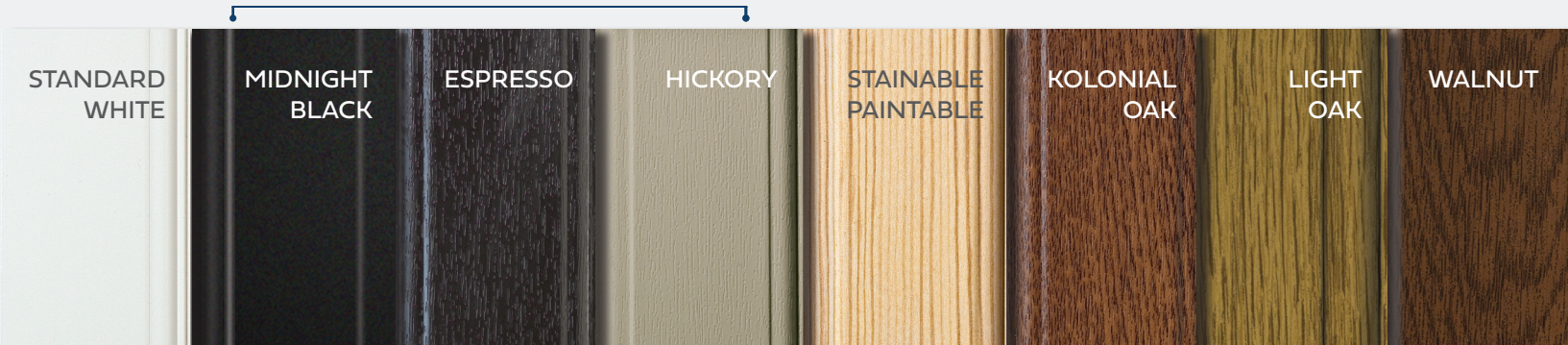


BLACK STANDARD WHITE STANDARD SATIN NICKEL\* MULTI-POINT SINGLE-POINT KEYED LOCK

\*Satin nickel only available in multi-point option.

## Warm Interior Finishes

Virtually indistinguishable from real wood, our interior colour overlays in walnut, light oak, and kolonial oak offer the warmth and comfort of a real wood finish. If colour matching to pre-existing paint colours or finishes, our woodgrain stainable and paintable overlay is the perfect solution. Our midnight black, espresso, and hickory overlays are available on the interior with a matching exterior.







INDUSTRY LEADING

**20-YEAR**  
WARRANTY

ON INTERIOR AND EXTERIOR  
COLOURED LAMINATES

## WARRANTY PROTECTION

Every North Star window and patio door is a custom-built, high-performance product that is backed by a transferable lifetime warranty. All interior and exterior coloured laminates are covered by an industry leading 20-year guarantee.

## The ComfortStar™ Advantage



### Tested and Certified

to CSA standards, with AAMA-certified extrusions and ENERGY STAR® compliant glass.



### Impressive Values

Designed to meet energy codes through 2030 with a U-value as low as 0.14 (imp) and 0.85 (m).



### Easy to Maintain

Dirt and grime are easily cleaned away using mild household cleaners. You will equally enjoy the smooth and easy operation with our new heavy-duty roller design.



### UV-Resistant Finishes

All ComfortStar™ sliding patio doors come with Fusion Colour Wrap™ scratch and abrasion resistant laminates that prevent colours from chipping or peeling.



### Thermal Performance

Our innovative fusion welded dual-walled sash, multi-stage sealed interlock, and added seals between the frame create an environment of superior thermal and functional performance for added protection year-round.





**northstarwindows.com**  
**1-800-265-5701**

North Star Windows & Doors  
40684 Talbot Line, St. Thomas, ON.  
N5P 3T2

The strong relationship we have with our various manufacturing partners has helped us maintain our reputation for leadership, innovation and the production of windows and doors of impeccable quality.



**igmac**



**fenestration  
canada**



**Super Spaces**  
BEYOND YOU AND THE SKYLINE

©2023 North Star Windows & Doors  
All rights reserved. Printed In Canada 275-100