



EXCLUSIVE PATIO DOOR COLLECTION

Two-Panel | Three-Panel | Four-Panel



QUALITY WINDOWS & DOORS. GREAT SERVICE. EXCEPTIONAL VALUE.

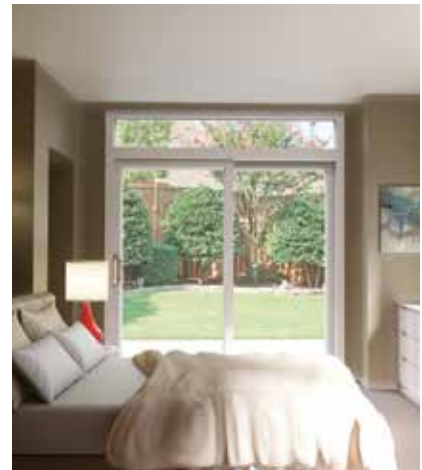
northstarwindows.com

SPECTACULAR VIEWS AVAILABLE IN ALL SHAPES AND SIZES





North Star has long been a leader in setting trends, most notably through the quality of our products. A deeper look reveals what makes our line of patio doors truly special.



When remodeling, renovating, or building your new dream home, we realize that you want style combined with energy efficiency and functionality. Our patio doors provide long lasting durability, low maintenance and the comfort you want in any weather.

North Star is dedicated to providing the most reliable patio door products available. We offer an exceptional series of products that integrates beauty with technical superiority with an emphasis on quality within every detail.

Eye-catching, energy efficient, secure and easy to care for, North Star patio doors have been created in response to the needs of busy people – and designed to enhance the visual presentation and value of your home.

Since 1985, North Star has been an industry leader in the manufacturing of attractive and energy-efficient vinyl windows and patio doors. The strong relationship we have with our various manufacturing partners has helped us maintain our reputation for leadership, innovation and the production of windows and doors of impeccable quality. When you buy North Star products, you know you're getting the best quality and value for your investment.



IMPRESSIVE FEATURES, UNEQUALED PERFORMANCE

North Star sliding glass patio doors offer a perfect combination of beauty, security and low-maintenance. They are an ideal option when space is tight – and foot traffic is heavy.

STYLISH GRILLES

The beauty of your North Star patio doors can be enhanced through traditional or contemporary grilles, available in four profiles: ¼" flat, ⅝" flat, ¾" contour and ⅞" SDL.



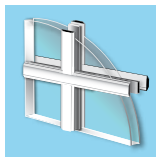
¼" FLAT



⅝" FLAT



¾" CONTOUR



⅞" SDL

ATTRACTIVE ACCENTS

Our *Between The Glass (BTG)* grilles are encased between the two panes of insulating glass, leaving a smooth surface that's a breeze to clean.

Our *Simulated Divided Lites (SDL)* grilles are applied to the outer surfaces of the insulated glass for a more traditional profile, and offer the outstanding performance of our energy-efficient windows and patio doors.



BUILT STRONG

Fusion Welded – The corners on all North Star sashes are fusion welded for added strength and a perfect seal.



ENERGY EFFICIENT FEATURES

1. Super Spacer® – The Quanex Premium Super Spacer between glass panes resists condensation, reduces noise and boosts R-values by up to 30%.
2. Energy Advantage™ Low-e – This high performance, energy-efficient glass features a near-invisible coating that reduces the amount of heat lost, while letting in light. Where solar heat gain protection is required LoE366 upgrade is available.
3. Energy Efficient Extrusions – North Star's multi-chambered vinyl extrusions save energy and money, and resist warping, cracking and peeling.

Other glass options include:

- Triple glazing (certain sizes only)
- Argon and Krypton gas filled
- Bronze- and gray-tint glass

TECHNICAL PERFORMANCE

North Star vinyl patio doors are one of the first on the market to be CSA certified.

Patio Doors conform to AAMA/WDMA/CSA101/Class R-PG45-SD

– Size tested 1800 x 2019 (71 x 80):

- Design Pressure (DP) 2400 Pa/1.5.2/A440-11-2400 Pa
- Water Test Pressure: 330 Pa
- Canadian Air Infiltration/Exfiltration: A3 -0.26/0.05
- NFRC tested to US energy rating standards
- Canadian ER-Energy Rating:
 - Low-e 29
 - Low-e/Argon 33
- Energy Star Certified in Canada and the US

OUTER BEAUTY – EXTERIOR STYLES TO COMPLETE THE LOOK OF YOUR HOME

North Star patio doors come in nine standard UV-resistant exterior laminated colors. Proven to reduce energy costs, these doors will remain attractive for years to come while increasing the value of your home.

EXTERIOR COLORS

Choose from a generous assortment of traditional earth tones and exciting architectural colors. We offer up to 9 full exterior vinyl color options, all of which match our 1000 Series window colors for a seamless exterior finish.

Exterior Colors



Due to variations in the printing process, the colors shown may not be exact. Ask your North Star dealer to show you an actual color sample. E.&O.E. Specifications are subject to change without notice.

CUSTOMIZE YOUR PATIO DOORS

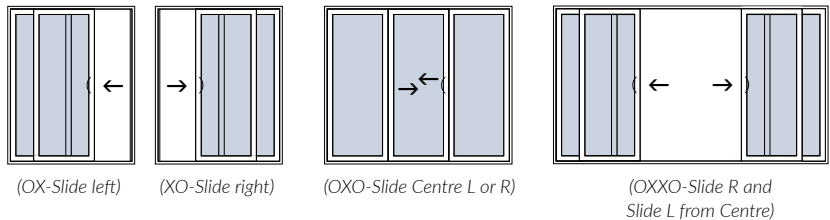
North Star's smooth operating patio doors allow you to maximize your floorspace while letting the outside in.

Unlike hinged doors, they glide open and close with ease and take up less space, making them the perfect choice for tighter spaces and heavy foot traffic.

Custom sizes, transoms and sidelites are also available to complement any style and décor.

North Star patio doors are available in standard two-, three- or four-panel configurations. Our patio doors are fully customizable to suit your home's specifications.

X = Operating Panel O=Fixed Panel



	STANDARD SLIDING PATIO DOOR WIDTHS								
	2 Panel Doors			3 Panel Doors			4 Panel Doors		
HEIGHT	58 ¾	70 ¾	94 ¾	88	106	142	116	140	188
79 ½	•	•	•	•	•	•	•	•	•
with Internal Mini Blinds	•	•		•	•		•	•	
with Triple Glazing	•	•		•	•		•	•	
95 ½		•	•		•	•		•	•

INNER BEAUTY – QUALITY FINISHES FOR CONVENIENCE, COMFORT AND STYLE

North Star is always improving design to better suit our customer's ever-changing needs. We focus on the aesthetics and functionality of our interior finishes because even the smallest details command attention.

INNOVATION AT YOUR FINGERTIPS WITH INTERNAL MINI BLINDS

North Star's internal mini blinds are sealed between two panes of tempered safety glass – no cleaning is ever required! Finger tip controls allow the blinds to be raised or lowered and adjusted to allow for light or privacy.



Traditional blinds are a thing of the past. North Star's internal mini blinds take functionality to another level.



QUALITY HARDWARE AND COLORS

Hardware and locks used in North Star's doors are durable and easy to use. All our hardware is available in standard white and black, or you can upgrade to our premium pewter, brass or satin nickel finishes.



QUALITY LOCKS

Your home is your castle. And your castle will feel secure thanks to patio doors with durable quality locks. Each door we manufacture features a standard single-point lock. For added assurance, North Star also offers several lock options, including a multi-point lock, a key lock or an easy-use security bolt.



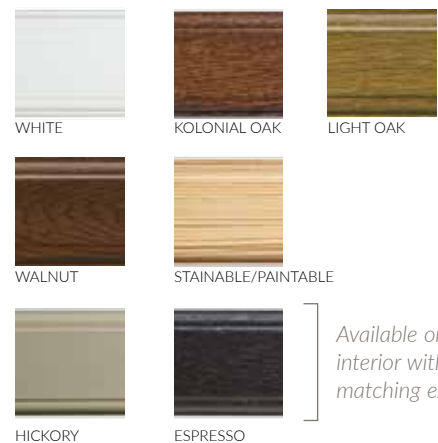
INTERIOR COLORS

You can also enjoy the warmth of an oak interior finish with our walnut, light oak or kolonial oak acrylic overlay, virtually indistinguishable from real wood. If matching to pre-existing wood stains or paint colors, use our stainable/paintable overlay with its wood grain texture.

HARDWARE COMBINATIONS

	DOOR		HARDWARE	
	EXTERIOR	INTERIOR	EXTERIOR	INTERIOR
STANDARD HARDWARE	White	White	White	White
	Color	White	Black	White
	Color	Oak or Walnut	Black	Black
	White	Oak or Walnut	White	Black
	Color Hickory or Espresso	Color Hickory or Espresso	Black	Black
OPTIONAL HARDWARE	Any	Any	Brass, Pewter or Satin*	Brass, Pewter or Satin*

*Exterior & Interior Must Match



Available on interior with matching exterior.



northstarwindows.com

The strong relationship we have with our various manufacturing partners has helped us maintain our reputation for leadership, innovation and the production of windows and doors of impeccable quality.



©2018 North Star Manufacturing (London) Ltd.
All rights reserved. Printed In Canada 129-364

